

Representative:
 ANNA ALTEMIR, arquitecta
 TEL: +34 682 52 02 89
 coord.basea@gmail.com

Contributors architects
 MÒNICA SANS
 PEDRO LORENZO

Volunteer team UPC
 VALERIA CID
 ANDREA LLANAS
 EMMA FERRER
 BERTA MARÍN
 ALEX ESPINA
 VICTORIA TOUS

RETROFITTING PROJECT
RANA PALACE
 Bhimpedi, Nepal



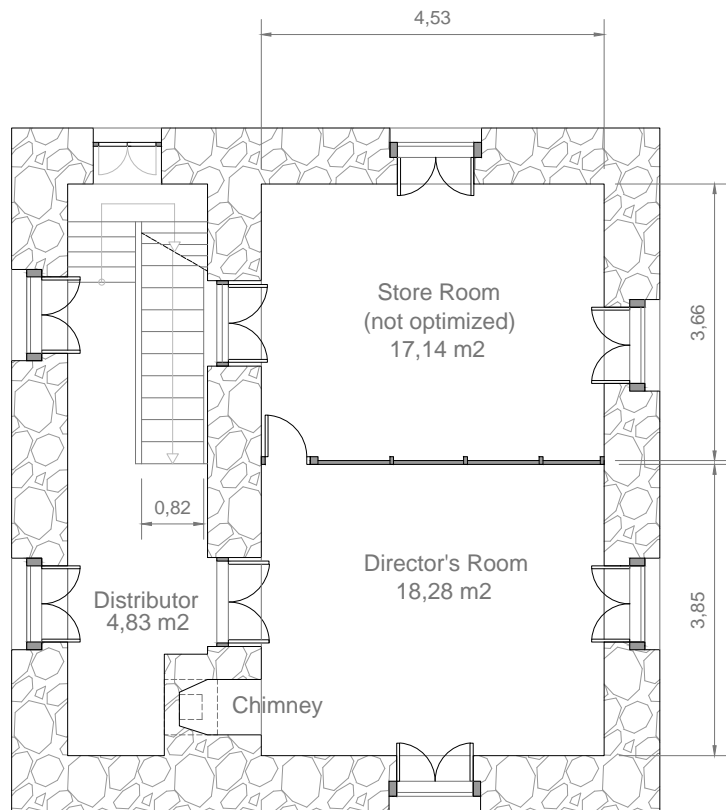
Representative:
 Mònica Sans

P1.1

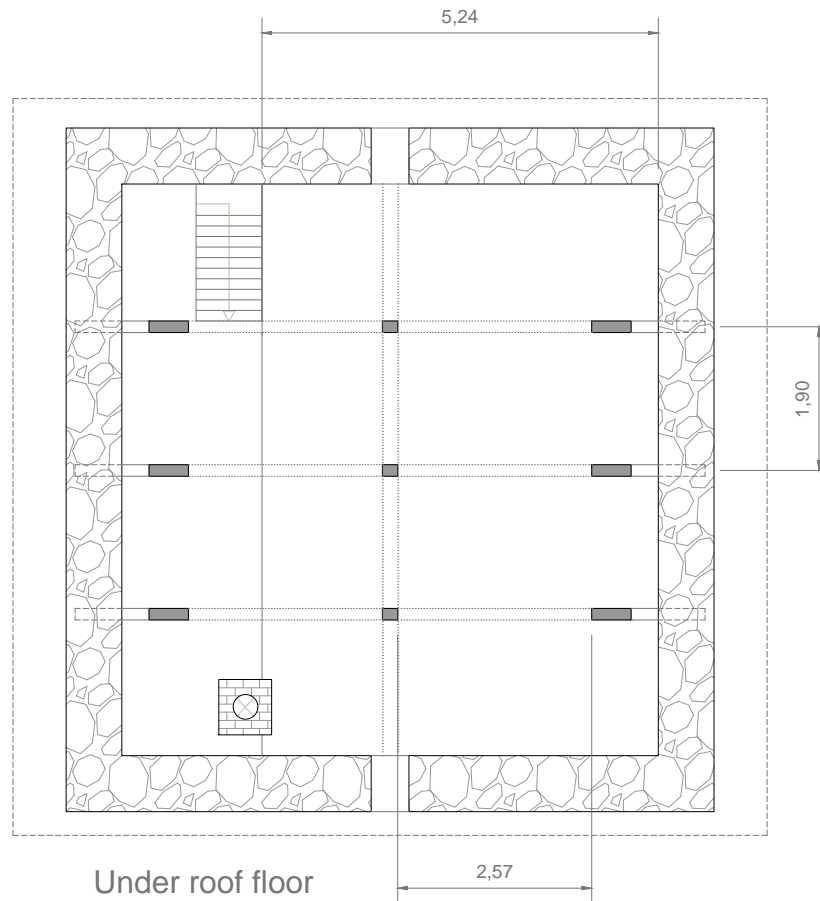
CURRENT DISTRIBUTION
 Ground floor
 SCALE 1/100



DATE OCTUBRE 2015
 REF. RANA PALACE PAL



First Floor



Under roof floor



Representative:
ANNA ALTEMIR, arquitecta
TEL: +34 682 52 02 89
coord.basea@gmail.com

Contributors architects
MÒNICA SANS
PEDRO LORENZO

Volunteer team UPC
VALERIA CID
ANDREA LLANAS
EMMA FERRER
BERTA MARÍN
ALEX ESPINA
VICTORIA TOUS

RETROFITTING PROJECT

RANA PALACE

Bhimpedi, Nepal



Representative:
Mònica Sans

P1.2

CURRENT DISTRIBUTION

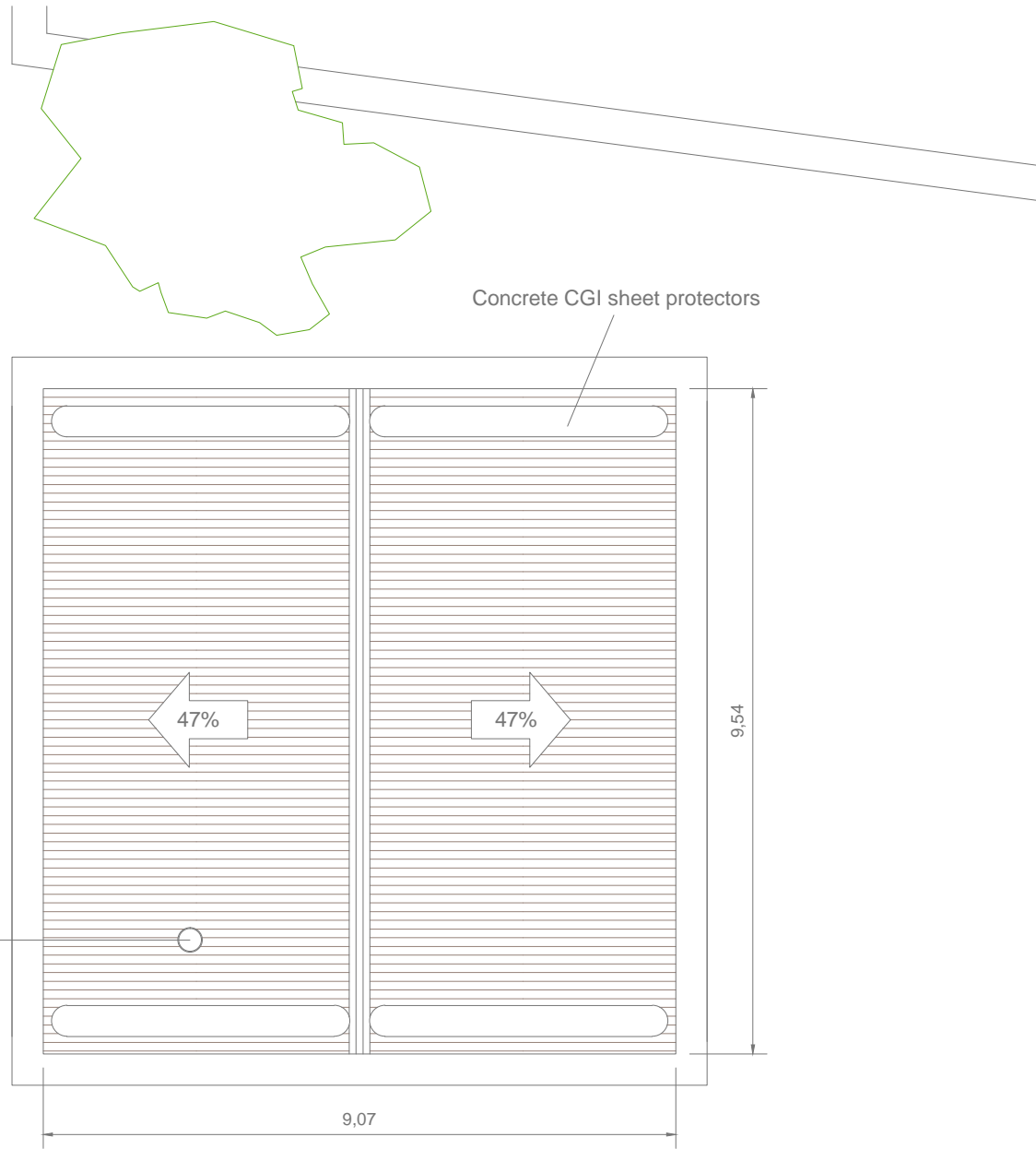
First & Under roof floor

SCALE

1/100



DATE OCTUBRE 2015
REF. RANA PALACE PAL



Deck. CGI sheet at 47%

RETROFITTING PROJECT

RANA PALACE

Bhimpedi, Nepal



Representative:
Mònica Sans

P1.3

CURRENT DECK

SCALE

1/100





base 

Representative:
ANNA ALTEMIR, arquitecta
TEL: +34 682 52 02 89
coord.basea@gmail.com

Contributors architects
MÒNICA SANS
PEDRO LORENZO

Volunteer team UPC
VALERIA CID
ANDREA LLANAS
EMMA FERRER
BERTA MARÍN
ALEX ESPINA
VICTORIA TOUS

RETROFITTING PROJECT

RANA PALACE

Bhimpedi, Nepal

 **Associació Amics del Nepal**

Representative:
Mònica Sans

P1.4

CURRENT EAST ELEVATION

SCALE

1/100



DATE OCTUBRE 2015
REF. RANA PALACE PAL



base 

Representative:
ANNA ALTEMIR, arquitecta
TEL: +34 682 52 02 89
coord.basea@gmail.com

Contributors architects
MÒNICA SANS
PEDRO LORENZO

Volunteer team UPC
VALERIA CID
ANDREA LLANAS
EMMA FERRER
BERTA MARÍN
ALEX ESPINA
VICTORIA TOUS

RETROFITTING PROJECT

RANA PALACE

Bhimpedi, Nepal



Associació Amics del Nepal

Representative:
Mònica Sans

P1.5

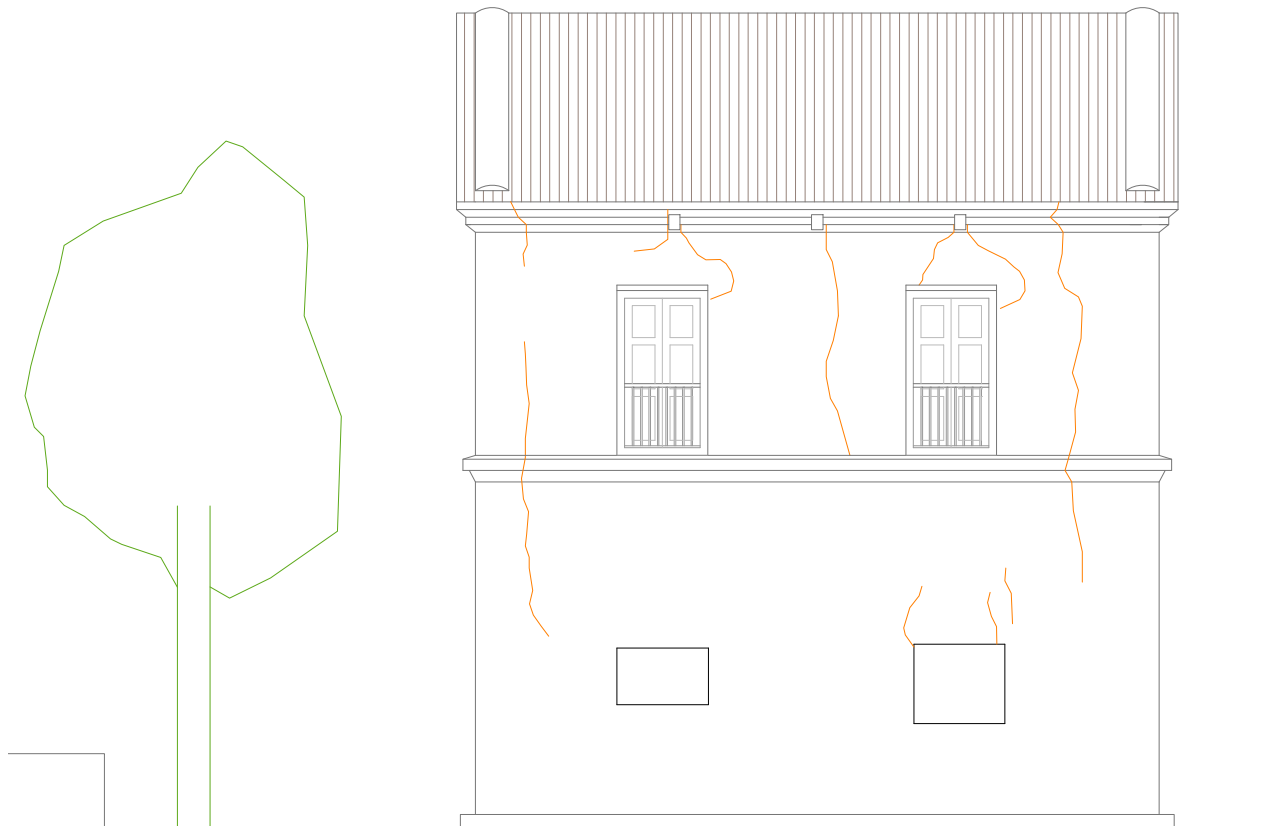
CURRENT SOUTH ELEVATION

SCALE

1/100



DATE OCTUBRE 2015
REF. RANA PALACE PAL



NORTH

 Fissures & craks

base 

Representative:
ANNA ALTEMIR, arquitecta
TEL: +34 682 52 02 89
coord.basea@gmail.com

Contributors architects
MÒNICA SANS
PEDRO LORENZO

Volunteer team UPC
VALERIA CID
ANDREA LLANAS
EMMA FERRER
BERTA MARÍN
ALEX ESPINA
VICTORIA TOUS

RETROFITTING PROJECT

RANA PALACE

Bhimpedi, Nepal

 **Associació Amics del Nepal**

Representative:
Mònica Sans

P1.6

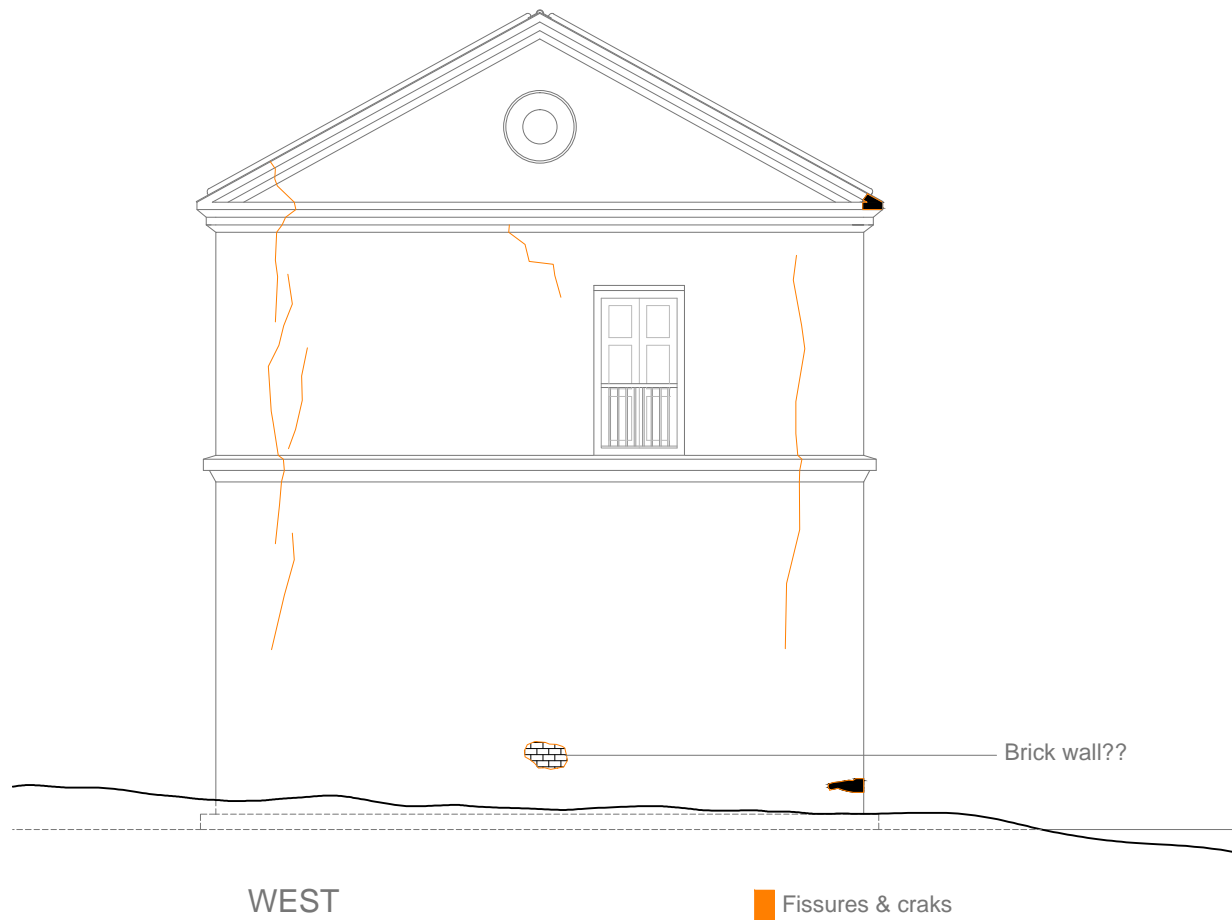
CURRENT NORTH ELEVATION

SCALE

1/100



DATE OCTUBRE 2015
REF. RANA PALACE PAL



base 

Representative:
ANNA ALTEMIR, arquitecta
TEL: +34 682 52 02 89
coord.basea@gmail.com

Contributors architects
MÒNICA SANS
PEDRO LORENZO

Volunteer team UPC
VALERIA CID
ANDREA LLANAS
EMMA FERRER
BERTA MARÍN
ALEX ESPINA
VICTORIA TOUS

RETROFITTING PROJECT

RANA PALACE

Bhimpedi, Nepal

 **Associació Amics del Nepal**

Representative:
Mònica Sans

P1.7

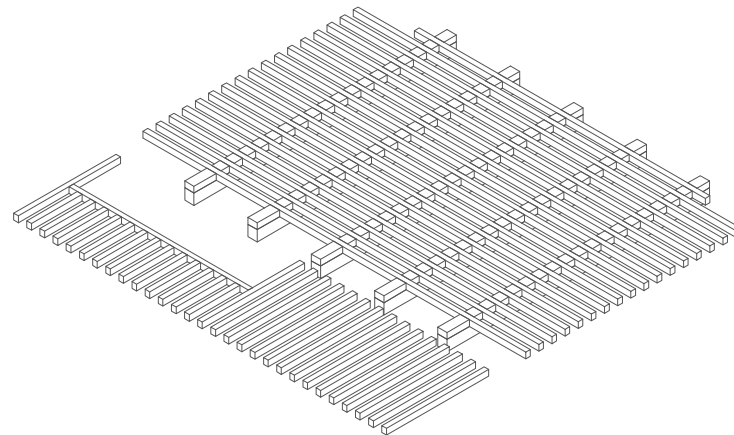
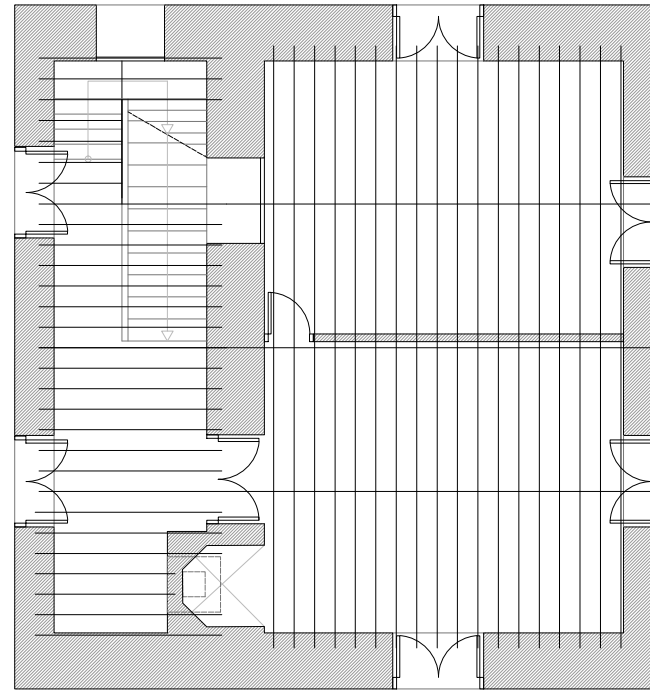
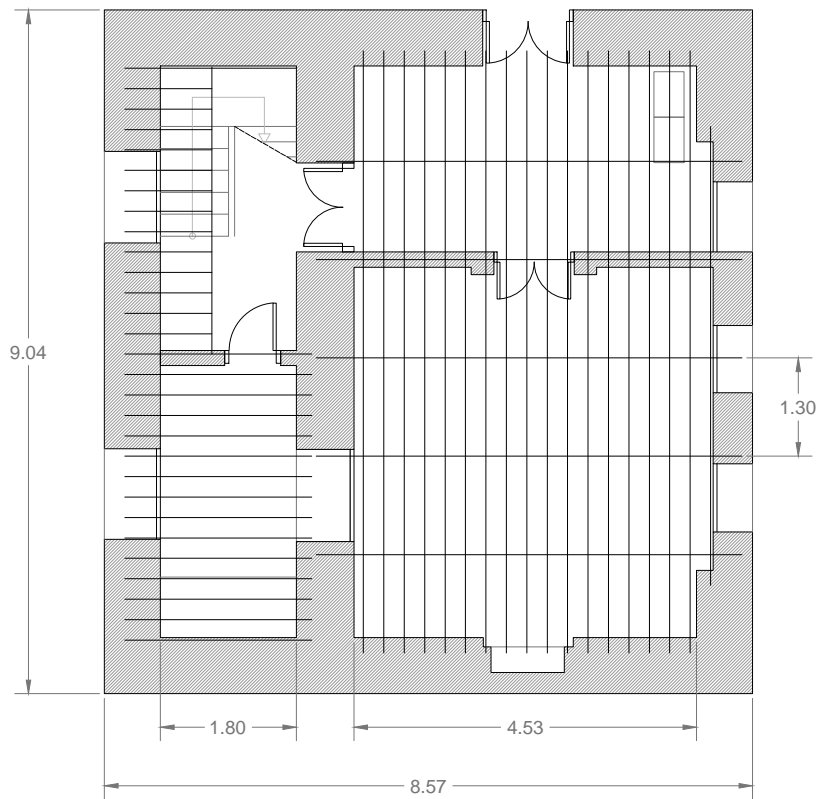
CURRENT WEST ELEVATION

SCALE

1/100



DATE OCTUBRE 2015
REF. RANA PALACE PAL



base 

Representative:
ANNA ALTEMIR, arquitecta
TEL: +34 682 52 02 89
coord.basea@gmail.com

Contributors architects
MÒNICA SANS
PEDRO LORENZO

Volunteer team UPC
VALERIA CID
ANDREA LLANAS
EMMA FERRER
BERTA MARÍN
ALEX ESPINA
VICTORIA TOUS

RETROFITTING PROJECT

RANA PALACE

Bhimpedi, Nepal

 **Associació Amics del Nepal**

Representative:
Mònica Sans

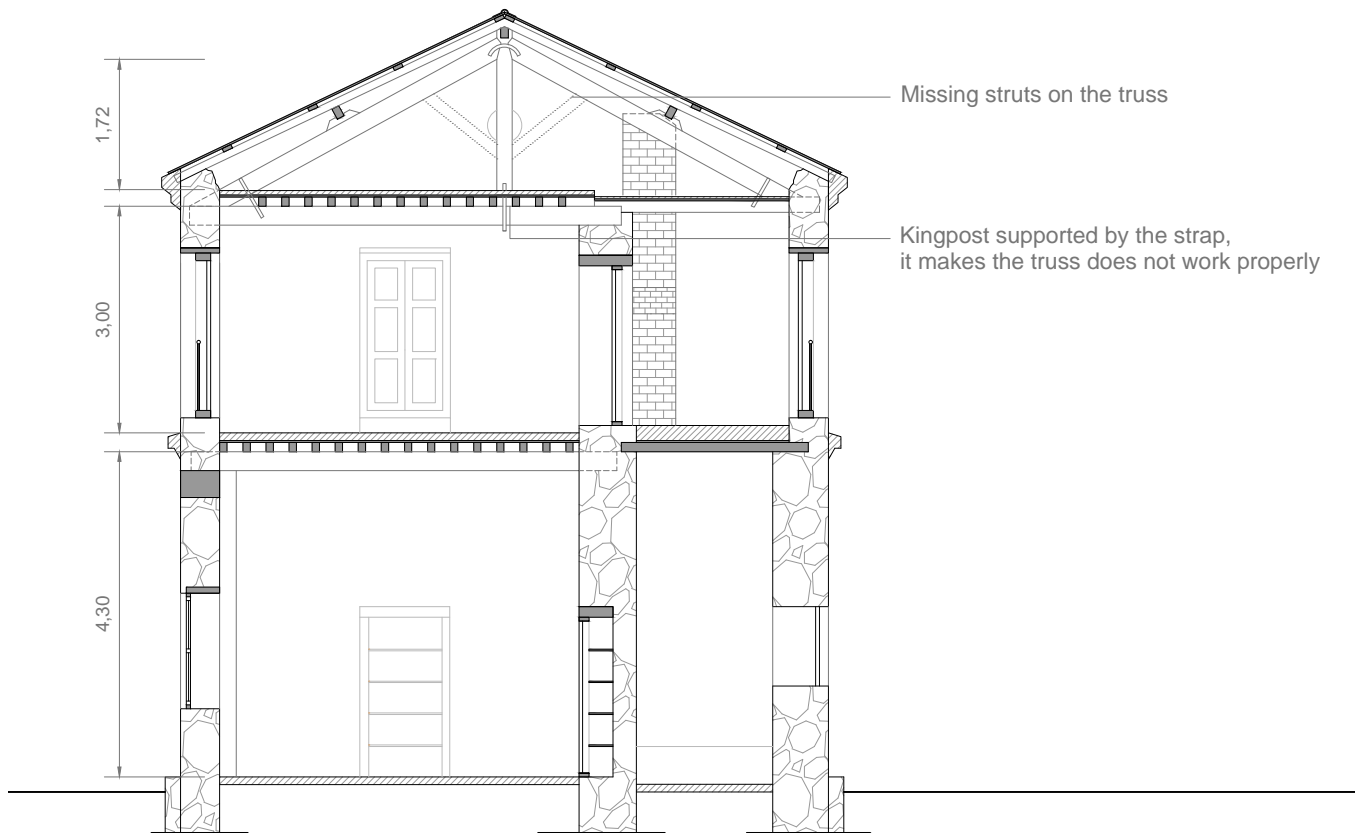
P1.8

CURRENT STRUCTURE
FIRST & UNDER ROOF FLOOR

SCALE 1/100



DATE OCTUBRE 2015
REF. RANA PALACE PAL



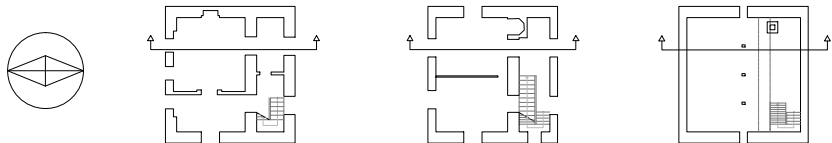
Missing struts on the truss

Kingpost supported by the strap,
it makes the truss does not work properly

1,72

3,00

4,30



RETROFITTING PROJECT

RANA PALACE

Bhimpedi, Nepal



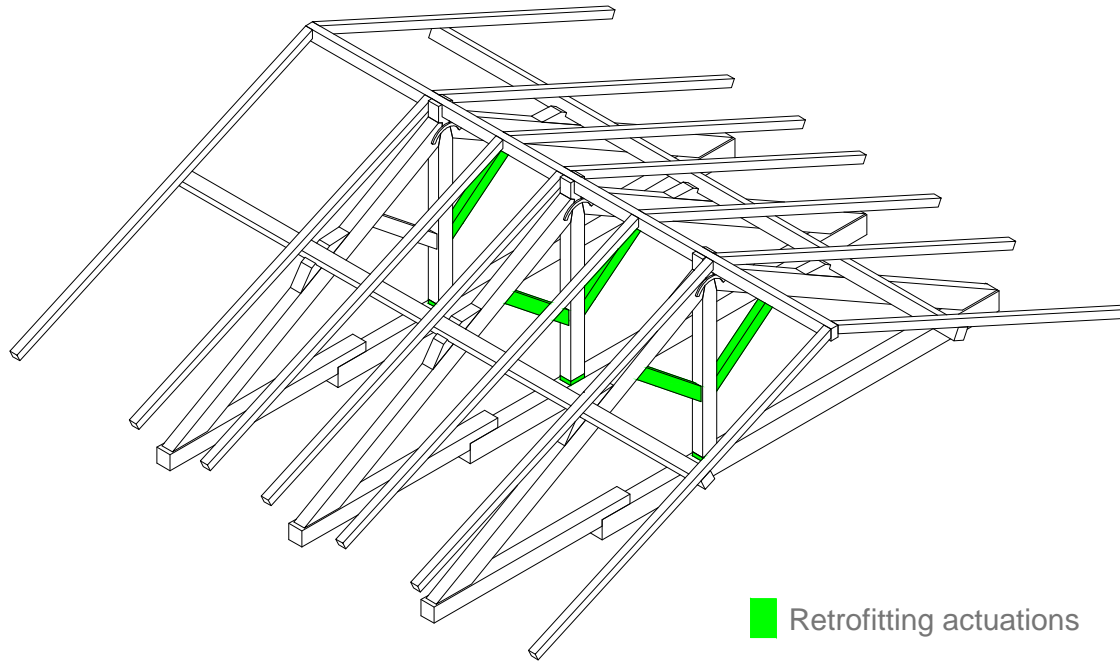
Representative:
Mònica Sans

P1.9

CURRENT CROSS SECTION

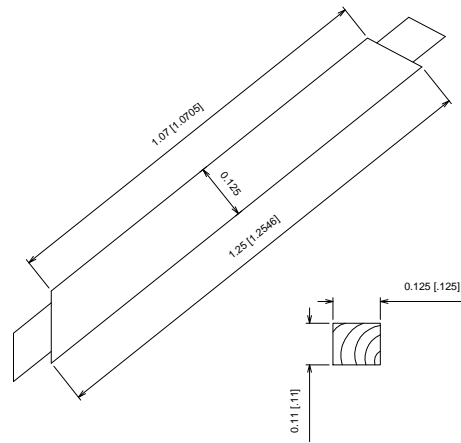
SCALE 1/100





■ Retrofitting actuations

1. Reposition of missing struts



2. Readjustment of kingpost



base 

Representative:
ANNA ALTEMIR, arquitecta
TEL: +34 682 52 02 89
coord.basea@gmail.com

Contributors architects
MÒNICA SANS
PEDRO LORENZO

Volunteer team UPC
VALERIA CID
ANDREA LLANAS
EMMA FERRER
BERTA MARÍN
ALEX ESPINA
VICTORIA TOUS

RETROFITTING PROJECT

RANA PALACE

Bhimpedi, Nepal

 **Associació Amics del Nepal**

Representative:
Mònica Sans

P1.10

RETROFITTING DECK

SCALE

1/100



DATE OCTUBRE 2015
REF. RANA PALACE PAL